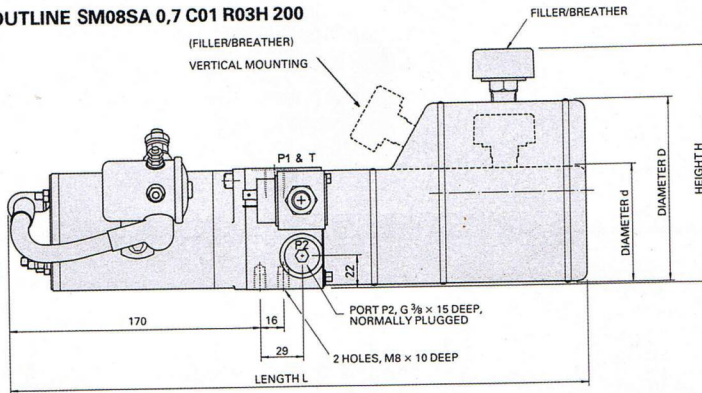
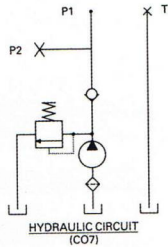
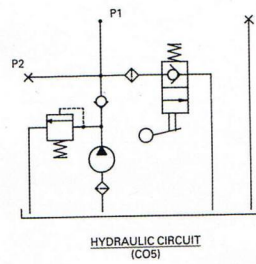
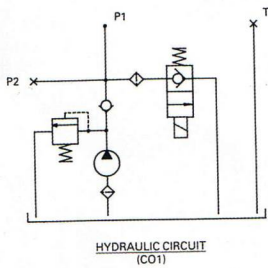




## MICRO PACK OUTLINE SM08SA 0,7 C01 R03H 200



## AVAILABLE CIRCUITS



A VERSION OF THE MICRO PACK IS AVAILABLE TO WHICH CETOP 3 VALVES CAN BE DIRECTLY MOUNTED.

## MICROPACK TANKS

CODE	Usable Capacity(C)		D	d	H	L
	Vert.	Horiz.				
SRO1	—	0,5	—	80	116	376
SRO2	—	1,0	—	80	116	476
SRO3	0,9	1,2	123	—	160	332
SRO5	1,9	2,0	123	—	160	480
SRO6	2,9	2,9	123	—	160	572