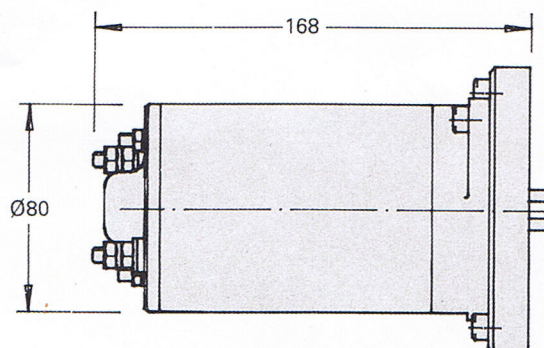


# Basic Motor Options



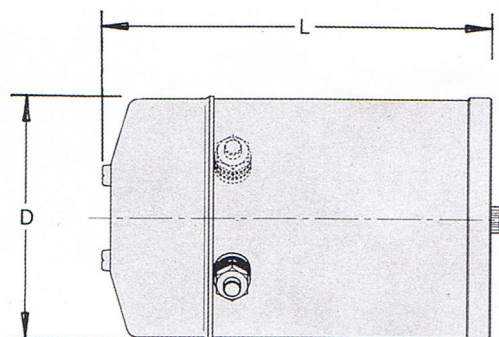
## 550W to 800W DC MOTORS†

SM05	† 12 VOLT. 550 WATT 2 TERMINAL
SM06	† 24 VOLT. 550 WATT 2 TERMINAL
SM08	† 12 VOLT. 800 WATT 2 TERMINAL
SM09	† 24 VOLT. 800 WATT 2 TERMINAL



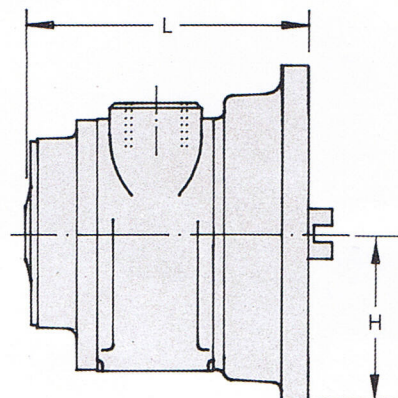
## 1,5kW to 3kW DC MOTORS†

	D	L
SM11 † 12 VOLT. 1500 WATT. 1 TERMINAL	116	182
SM12 † 12 VOLT. 1500 WATT. 2 TERMINAL	116	182
SM15 † 24 VOLT. 2000 WATT. 1 TERMINAL	116	182
SM16 † 24 VOLT. 2000 WATT. 2 TERMINAL	116	182
SM30 † 12 VOLT. 2400 WATT. 2 TERMINAL	128	233
SM32 † 24 VOLT. 3000 WATT. 2 TERMINAL	128	233



## VANE AIR MOTORS\*

	L	H
SM80 *V2 0,7 kW	92	64
SM81 *V4 1,8 kW	109	64
SM82 *V6 3 kW	155	64



† All DC motors are available with start solenoids

\* Power at 6 Bar air supply pressure