

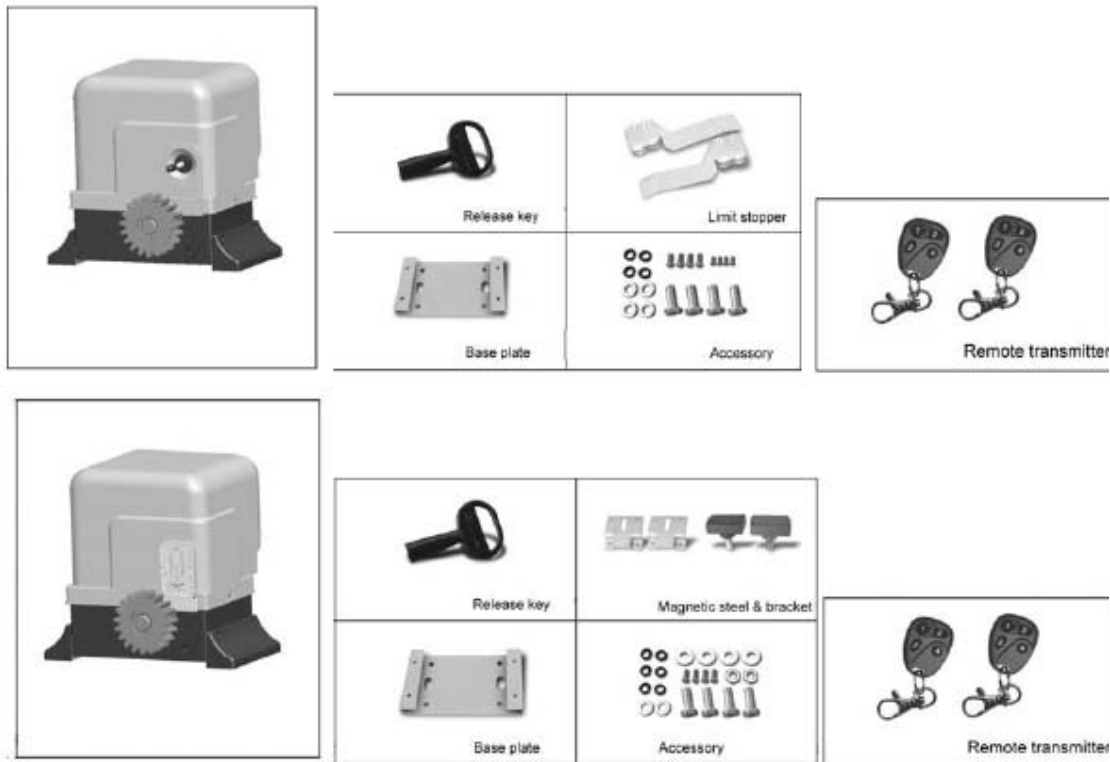


SAMT A Div Of TONSON Pty. Ltd.

“Exclusive Techniques Innovative Ideas”

1.0 Slide Gate Motor Manual

1.1 Complete Kits:

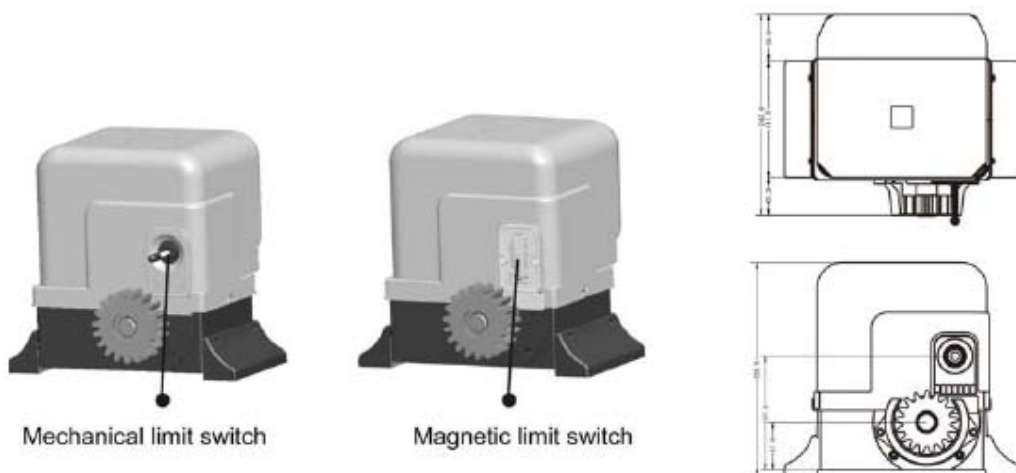


1.2 Dimension

1.2.1 Built-in control board.

1.2.2 Terminals available for push button, photocell, alarm lamp.

1.2.3 Auto-closing is available, time delay is adjustable.



Slide Gate Motor - Kit Descriptions

www.samt.com.au

Air Motors – Air Mixers – Air Fans – AC Motors – DC Motors – Industrial Gearboxes

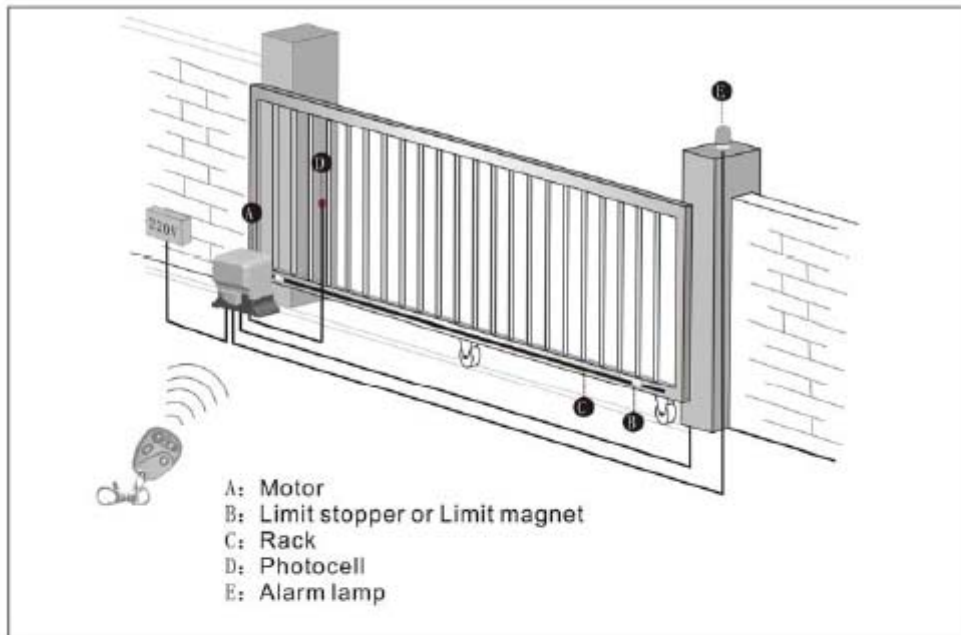


SAMT A Div Of TONSON Pty. Ltd.

“Exclusive Techniques Innovative Ideas”

2.0 General Layout

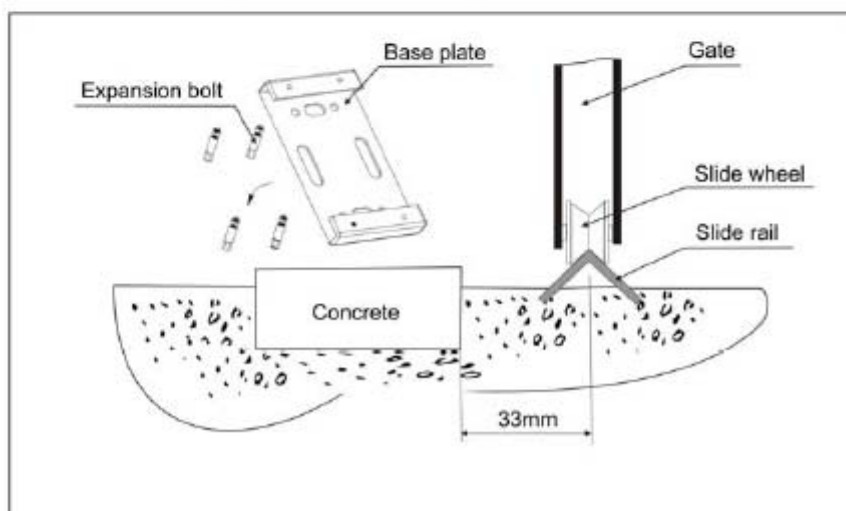
2.1 Installation Descriptions:



2.2 Install the gate opener

2.2.1 Install base plate on the ground, then fasten the gate opener on it.

2.2.2 Ensure base plate on horizontal position.



Slide Gate Motor - Kit Descriptions

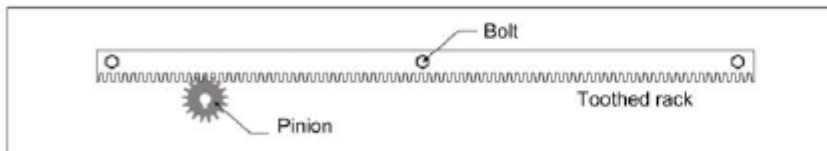
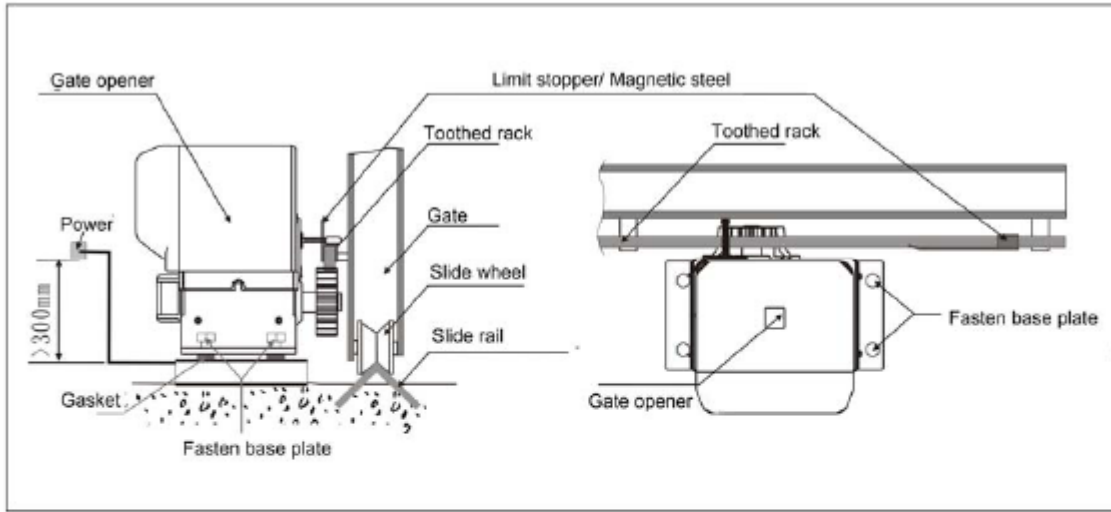
www.samt.com.au

Air Motors – Air Mixers – Air Fans – AC Motors – DC Motors – Industrial Gearboxes

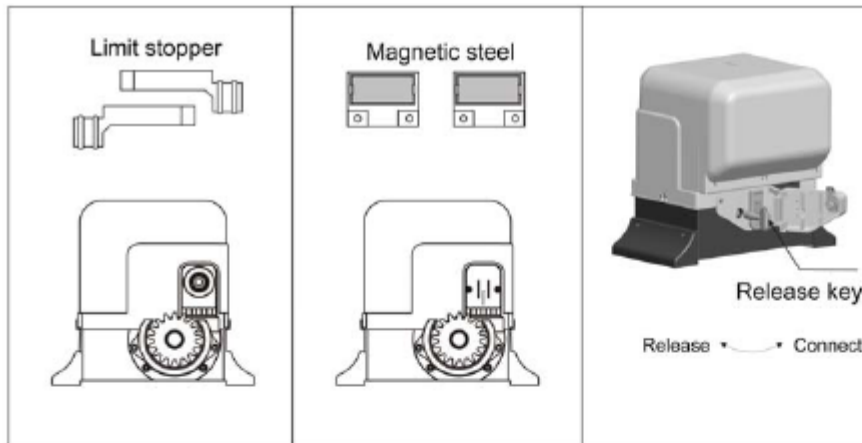


“Exclusive Techniques Innovative Ideas”

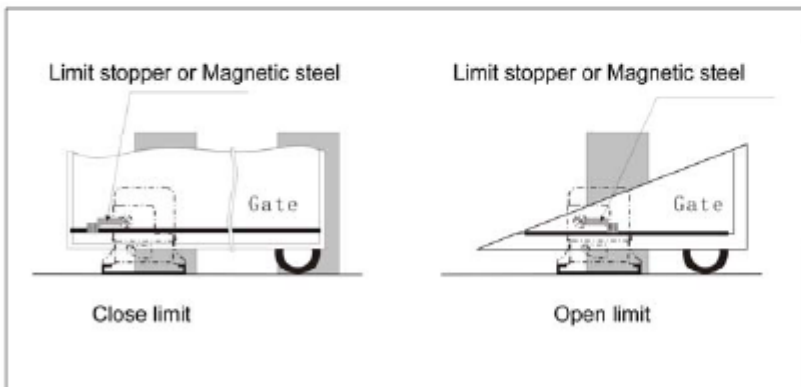
2.3 Install the limit stopper or limit magnet at proper position on the steel rack



2.3.1 The gear box of the gate opener must be released before fix the limit stopper or magnet on the rack. Use the key clockwise to release the gear as below:



2.3.2 Move the gate manually to the open limit & close limit, mark the points on the rack, then, fix the limit stoppers or magnets at the limit points on the rack.



Note: The distance between the magnetic steel and the sliding gate opener is 10-20mm. The magnetic steel are in same horizontal line with the limit switch. Blue magnet is for Open Limit and the red one is for Close Limit.